



introduction

architecture

engineering

consultancy

services

administration  
buildings

industrial buildings

mix use development  
buildings

residential – social –  
cultural buildings

reference letters



>> graduated from yildiz technical university in 1992 with the honors degree and had the master's degree in 1994 by issuing thesis on "architectural design in earthquake zones"

>> worked as an architect and contractor between 1996-1998

>> acted as a project architect, a project leader, a project manager, a project director (respectively) in "seyas sey architecture engineering consultancy" between 1998 - 2010

>> acted as an executive director in "bahadır real estate development" between 2010 – 2011

>> worked as a chief executive officer and signed projects as an architect of record in "seyas sey architecture engineering consultancy" between 2011 – 2014

>> decided to have his own brand and established "alaz albay architecture engineering consultancy" in 2014

### **alaz albay architecture engineering consultancy inc.;**

>> provides innovative and cost effective architectural, engineering and consultancy services starting from project identification to preparation of overall design and tender documentation along with construction supervision and construction management

>> creates design and management procedures specially tailored for the project demands

introduction

architecture

engineering

consultancy

services

administration  
buildings

industrial buildings

mix use development  
buildings

residential – social –  
cultural buildings

reference letters

>> aims to achieve sustainable, flexible, innovative and economical architectural solutions considering investment costs, maintenance and operation costs.

>> adopts the principle of reaching the "form" from the "function" in architecture design"

>> at every stage of architecture design, assures coordination with other engineering disciplines which is believed to be an inescapable element of overall design.

>> undertakes the construction management in its projects and automatically manages to do the current cost forecasts in parallel to design stages.

>> is the architect of record of the first building received the LEED (Leadership in Energy and Environmental Design) Certificate in Turkey, Siemens's Gebze Campus.

>> offers interior architecture and landscape architecture in the scope of design services.

>> is actively involved from planning to tender documentation stage in architectural designs.

introduction

architecture

engineering

consultancy

services

administration  
buildings

industrial buildings

mix use development  
buildings

residential – social –  
cultural buildings

reference letters

>> provides structural, mechanical and electrical engineering services gathered in three main engineering groups together with his in-house sources, and with alliance firms that have become experts in their field.

>> provides structural / seismic design and calculations and tender documents in the context of civil engineering in house.

>> provides services in the fields of plumbing, hvac network, fire extinguishing network, industrial system network, building automation in mechanical engineering.

>> provides services in the fields of medium voltage, low voltage, weak current systems, fire alarm systems, building automation systems in electrical engineering.

>> undertakes the construction management in its projects and automatically manages to do the current cost forecasts in parallel to design stages.



introduction

architecture

engineering

consultancy

services

administration  
buildings

industrial buildings

mix use development  
buildings

residential – social –  
cultural buildings

reference letters

>> aside from engineering and architectural design services; provides design management, tender management, construction management and start up management services under either total project management or as individual services.

>> provides preparation of specification for invitation to tender, design specification, preparation of design activities, receipt of proposals, assessment of design proposals, contracting, checking confirmation of designs to set standards, prepare work schedule, organize presentations, budgeting, management of permit process, receipt of designs in terms of design management.

>> provides tender management, preparation of prequalification specification, draft contract, technical specification, administration specification, unit price list, boq, tender assessment specification and tender file, collecting prequalification data in accordance with the tender file assessment, reporting and finalizing, issuing tender documents for bids, issuing amendments, gathering bids, assessments, finalizing and contracting in terms of tender management.

>> provides provision of quality, quantity and completion in compliance with the project contract and specifications, within the set period and budget with a part time technical staff in terms of construction supervision.

>> provides provision of quality, quantity and completion in compliance with the project contract and specifications, quality control and quality assurance, job safety, planning, budgeting, cash flow towards completion and completion within the set period and budget with a full time technical staff in terms of construction management.

- introduction
- architecture
- engineering
- consultancy
- services**
- administration buildings
- industrial buildings
- mix use development buildings
- residential – social – cultural buildings
- reference letters

## pre-design stage

### research / studies

geotechnical, topographical, assessment, best use analyses, project designation, environmental impact assessment

### planning

master planning, conceptual design, due diligence, regional planning

## design stage

### design

preparing architectural, structural, mechanical, electrical, infrastructure, landscape, interior designs in conceptual design, schematic design, design development, construction documents stages

### design management

managing, reviewing reporting design services along with all disciplines, value engineering

### tender

preparing tender documentation comprises; prequalification specification, tender specification, draft contract, bill of quantities, unit price definitions, technical specification, administration specification

### tender management

prequalification, value engineering, tendering, evaluation of bidders, contract negotiation

## construction stage

### construction supervision

providing site supervision services with periodically or full time professionals comprises quality control, reporting, value engineering

### construction management

providing construction management services with full time professionals comprises quality control, quality assurance, health and safety coordination, planning, scheduling, budgeting, cash flow and schedule control, value engineering

administration buildings

introduction

architecture

engineering

consultancy

services

administration  
buildings

industrial buildings

mix use development  
buildings

residential – social –  
cultural buildings

reference letters



# 3m super hub administration building // 3m //

- design service ☒
- supervision service ☐
- management service ☒

efz - çorlu //  
2013 //  
1.848 sqm //

introduction

architecture

engineering

consultancy

services

administration  
buildings

industrial buildings

mix use development  
buildings

residential – social –  
cultural buildings

reference letters



# alarko carrier administration building //

## alarko carrier //

- design service ☒
- supervision service ☒
- management service ☐

gosb //

2001 //

6.500 sqm //



introduction

architecture

engineering

consultancy

services

administration  
buildings

industrial buildings

mix use development  
buildings

residential – social –  
cultural buildings

reference letters



# siemens gosb administration building //

## siemens //

- design service ☒
- supervision service ☐
- management service ☒

gosb – kocaeli //

2007 //

6.400 sqm //

introduction

architecture

engineering

consultancy

services

administration  
buildings

industrial buildings

mix use development  
buildings

residential – social –  
cultural buildings

reference letters



# clariant headquarter building //

## clariant //

- design service ☒
- supervision service ☐
- management service ☒

gosb – Kocaeli //

2011 //

4.000 sqm //

introduction

architecture

engineering

consultancy

services

administration  
buildings

industrial buildings

mix use development  
buildings

residential – social –  
cultural buildings

reference letters



# selçuk ecza headquarter building //

## selçuk ecza holding //

design service ☒

supervision service ☐

management service ☐

istanbul //

2011 //

24.000 sqm //



introduction

architecture

engineering

consultancy

services

administration  
buildings

industrial buildings

mix use development  
buildings

residential – social –  
cultural buildings

reference letters



## selçuk ecza headquarter building //

### selçuk ecza holding //

design service ☒

supervision service ☐

management service ☐

istanbul //

2011 //

24.000 sqm //

introduction

architecture

engineering

consultancy

services

administration  
buildings

industrial buildings

mix use development  
buildings

residential – social –  
cultural buildings

reference letters



# selçuk ecza headquarter building //

## selçuk ecza holding //

- design service ☒
- supervision service ☐
- management service ☐

istanbul //

2011 //

22.000 sqm //



introduction

architecture

engineering

consultancy

services

administration  
buildings

industrial buildings

mix use development  
buildings

residential – social –  
cultural buildings

reference letters



imes osb bank building //

imes osb //

- design service ☒
- supervision service ☐
- management service ☐

kocaeli //

2012 //

6.500 sqm //

introduction

architecture

engineering

consultancy

services

administration  
buildings

industrial buildings

mix use development  
buildings

residential – social –  
cultural buildings

reference letters



# imes osb administration building //

## imes osb //

- design service ☒
- supervision service ☐
- management service ☐

kocaeli //

2012 //

9.500 sqm //



introduction

architecture

engineering

consultancy

services

administration  
buildings

industrial buildings

mix use development  
buildings

residential – social –  
cultural buildings

reference letters



# areva administration building //

## areva (schneider) //

- design service ☒
- supervision service ☒
- management service ☐

tosb - kocaeli //

2009 //

6.000 sqm //

introduction

architecture

engineering

consultancy

services

administration  
buildings

industrial buildings

mix use development  
buildings

residential – social –  
cultural buildings

reference letters



# anadolu motor headquarter building //

## anadolu motor //

- design service ☒
- supervision service ☐
- management service ☒

çayırova - kocaeli //

2014 //

4.500 sqm //



introduction

architecture

engineering

consultancy

services

administration  
buildings

industrial buildings

mix use development  
buildings

residential – social –  
cultural buildings

reference letters



# adel faber administration facility //

## adel faber castell //

- design service ☒
- supervision service ☐
- management service ☒

çayırova – kocaeli //

2014 //

36.438 sqm //

introduction

architecture

engineering

consultancy

services

administration  
buildings

industrial buildings

mix use development  
buildings

residential – social –  
cultural buildings

reference letters



# bilim ilaç administration building //

## bilim ilaç //

- design service ☒
- supervision service ☐
- management service ☒

gosb - kocaeli //

2008 //

4.500 sqm //



introduction

architecture

engineering

consultancy

services

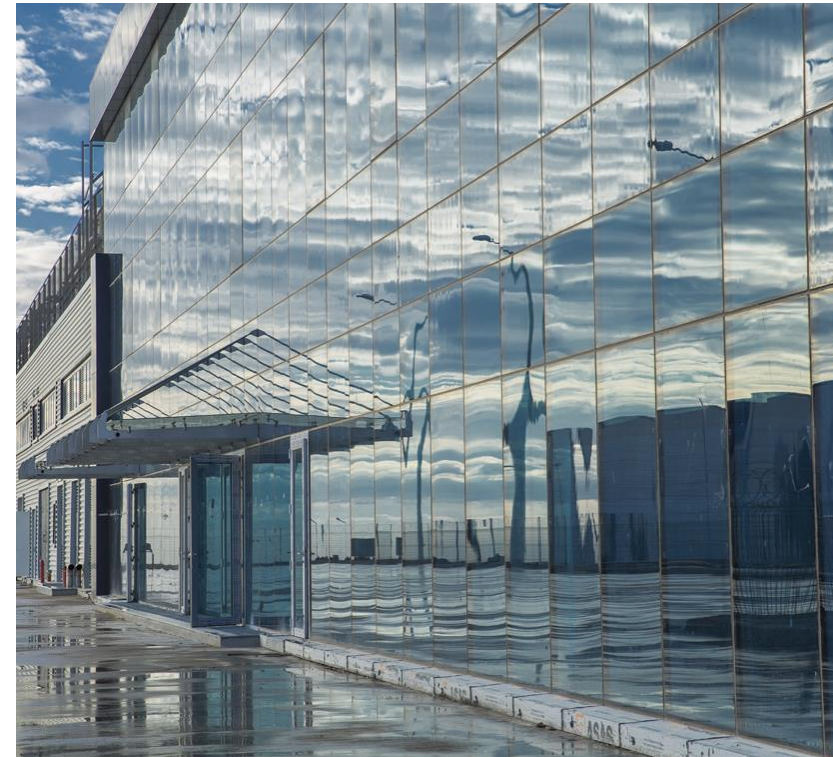
administration  
buildings

industrial buildings

mix use development  
buildings

residential – social –  
cultural buildings

reference letters



# plastifay administration building //

## plastifay //

- design service ☒
- supervision service ☐
- management service ☐

gebkim osb - kocaeli //

2014 //

2.070 sqm //

introduction

architecture

engineering

consultancy

services

administration  
buildings

industrial buildings

mix use development  
buildings

residential – social –  
cultural buildings

reference letters



# putzmeister administration building //

## putzmeister //

- design service ☒
- supervision service ☐
- management service ☒

cerkezköy osb - tekirdag //

2007 //

4.958 sqm //

introduction

architecture

engineering

consultancy

services

administration  
buildings

industrial buildings

mix use development  
buildings

residential – social –  
cultural buildings

reference letters



# imperial tobacco administration building //

## imperial tobacco //

- design service ☒
- supervision service ☐
- management service ☒

manisa osb //

2004 //

3.500 sqm //



introduction

architecture

engineering

consultancy

services

administration  
buildings

industrial buildings

mix use development  
buildings

residential – social –  
cultural buildings

reference letters



## bank headquarter project //

private //

in association with dipl.arch. durul kuşdemir //

design service ☒

supervision service ☐

management service ☐

istanbul //

2013 //

440.000 sqm //

industrial buildings



introduction

architecture

engineering

consultancy

services

administration  
buildings

industrial buildings

mix use development  
buildings

residential – social –  
cultural buildings

reference letters



# alarko carrier production facility //

## alarko - carrier //

- design service ☒
- supervision service ☒
- management service ☐

gosb - kocaeli //

2001 //

35.000 sqm //

introduction

architecture

engineering

consultancy

services

administration  
buildings

industrial buildings

mix use development  
buildings

residential – social –  
cultural buildings

reference letters



# akümsan plastic injection facility //

## akümsan //

- design service ☒
- supervision service ☒
- management service ☐

kıraç - istanbul //

2002 //

5.400 sqm //



introduction

architecture

engineering

consultancy

services

administration  
buildings

industrial buildings

mix use development  
buildings

residential – social –  
cultural buildings

reference letters



imperial tobacco facility //

imperial tobacco //

design service ☒

supervision service ☐

management service ☒

manisa osb //

2004 //

30.000 sqm //



introduction

architecture

engineering

consultancy

services

administration  
buildings

industrial buildings

mix use development  
buildings

residential – social –  
cultural buildings

reference letters



# clariant production and storage facility //

## clariant (t1p- emulsions) //

- design service ☒
- supervision service ☐
- management service ☒

gosb - kocaeli //

2012 //

14.000 sqm //

introduction

architecture

engineering

consultancy

services

administration  
buildings

industrial buildings

mix use development  
buildings

residential – social –  
cultural buildings

reference letters



## polyplex polyester film facility //

### polyplex europa //

- design service ☒
- supervision service ☐
- management service ☒

efz - çorlu //

2005 //

13.000 sqm //

introduction

architecture

engineering

consultancy

services

administration  
buildings

industrial buildings

mix use development  
buildings

residential – social –  
cultural buildings

reference letters



# polyplex polyester chips facility //

## polyplex europa //

- design service ☒
- supervision service ☐
- management service ☒

efz - çorlu //

2006 //

6.000 sqm //



introduction

architecture

engineering

consultancy

services

administration  
buildings

industrial buildings

mix use development  
buildings

residential – social –  
cultural buildings

reference letters



## siemens production facility - phase 1 //

siemens //

design service ☒

supervision service ☐

management service ☒

gosb – kocaeli //

2007 //

40.216 sqm //

introduction

architecture

engineering

consultancy

services

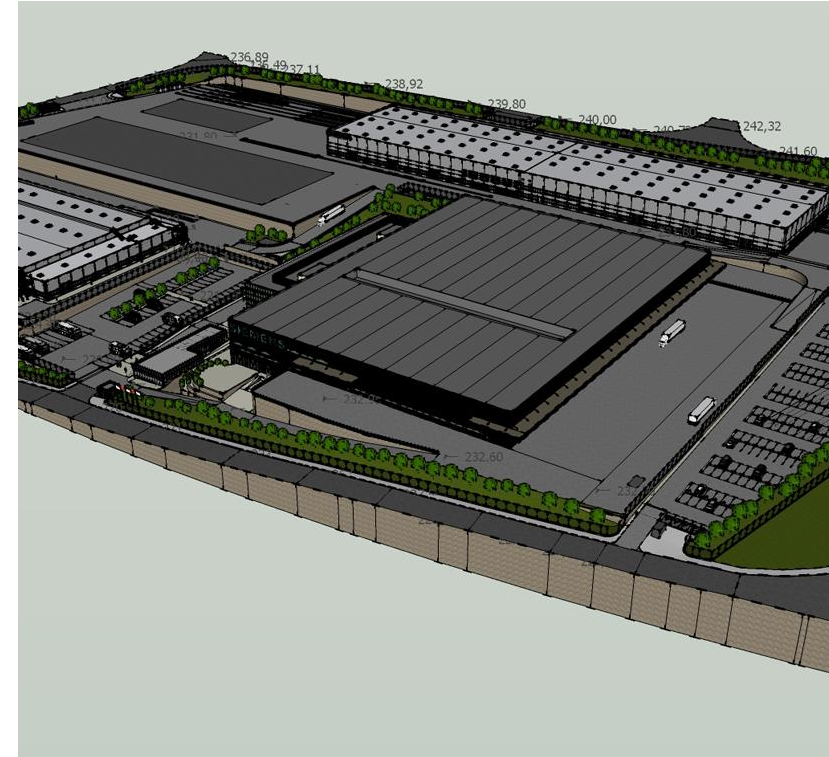
administration  
buildings

industrial buildings

mix use development  
buildings

residential – social –  
cultural buildings

reference letters



## siemens production facility - phase 2 //

siemens //

- design service ☒
- supervision service ☐
- management service ☒

gosb – kocaeli //

2016 //

60.000 sqm //



introduction

architecture

engineering

consultancy

services

administration  
buildings

industrial buildings

mix use development  
buildings

residential – social –  
cultural buildings

reference letters



# siemens lp-cp production facility //

siemens //

- design service ☒
- supervision service ☐
- management service ☒

gosb – kocaeli //

2016 //

11.350,00 sqm //

introduction

architecture

engineering

consultancy

services

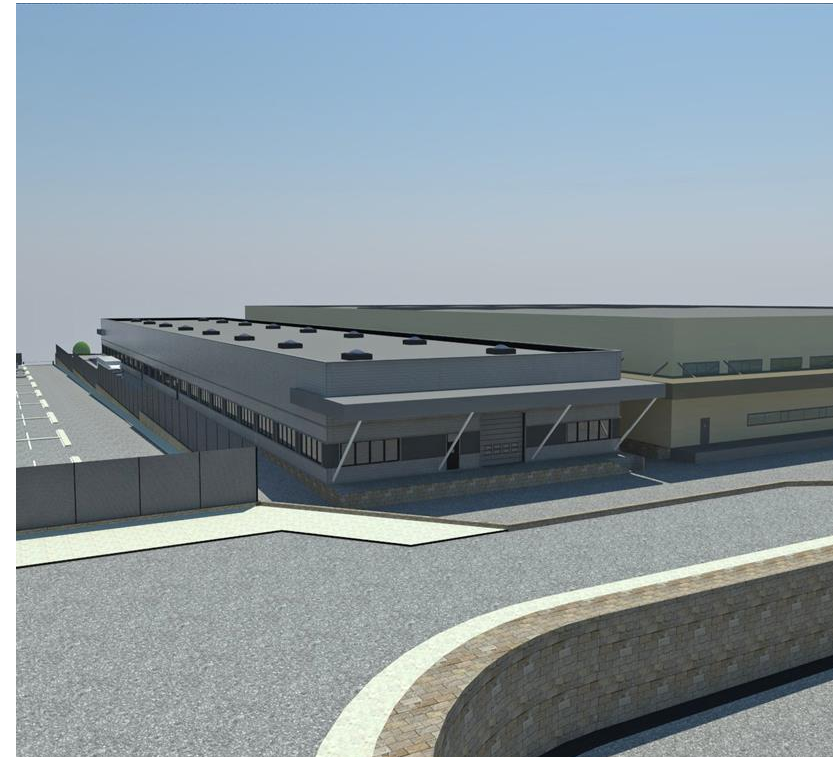
administration  
buildings

industrial buildings

mix use development  
buildings

residential – social –  
cultural buildings

reference letters



# siemens ms extension building //

siemens //

- design service ☒
- supervision service ☐
- management service ☒

gosb – kocaeli //

2016 //

3.980,00 sqm //



introduction

architecture

engineering

consultancy

services

administration  
buildings

industrial buildings

mix use development  
buildings

residential – social –  
cultural buildings

reference letters



# siemens mo-ut production facility //

siemens //

- design service ☒
- supervision service ☐
- management service ☐

gosb – kocaeli //

2016 //

16.550,00 sqm //



introduction

architecture

engineering

consultancy

services

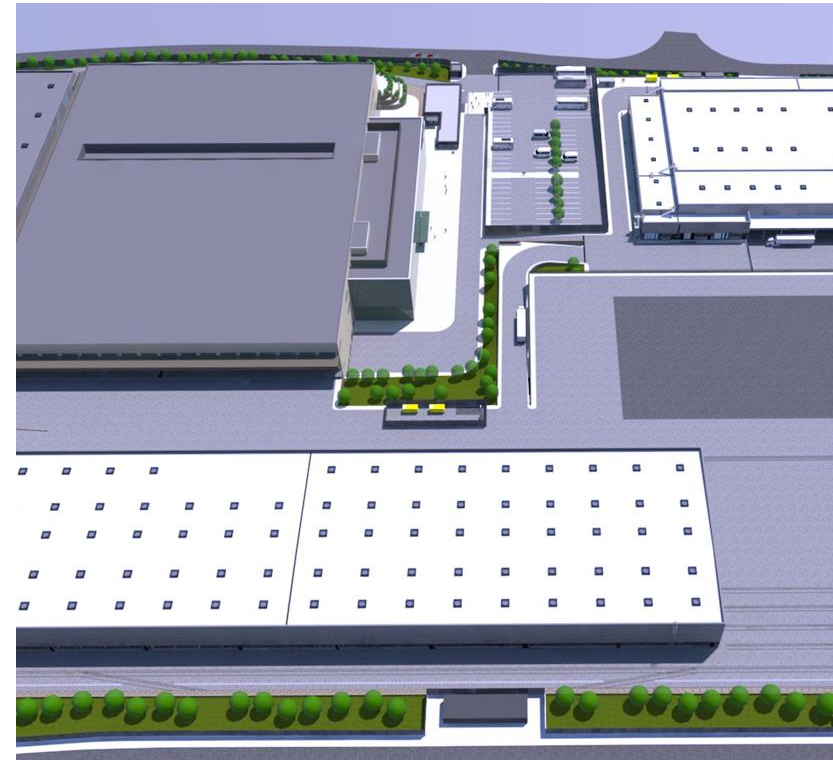
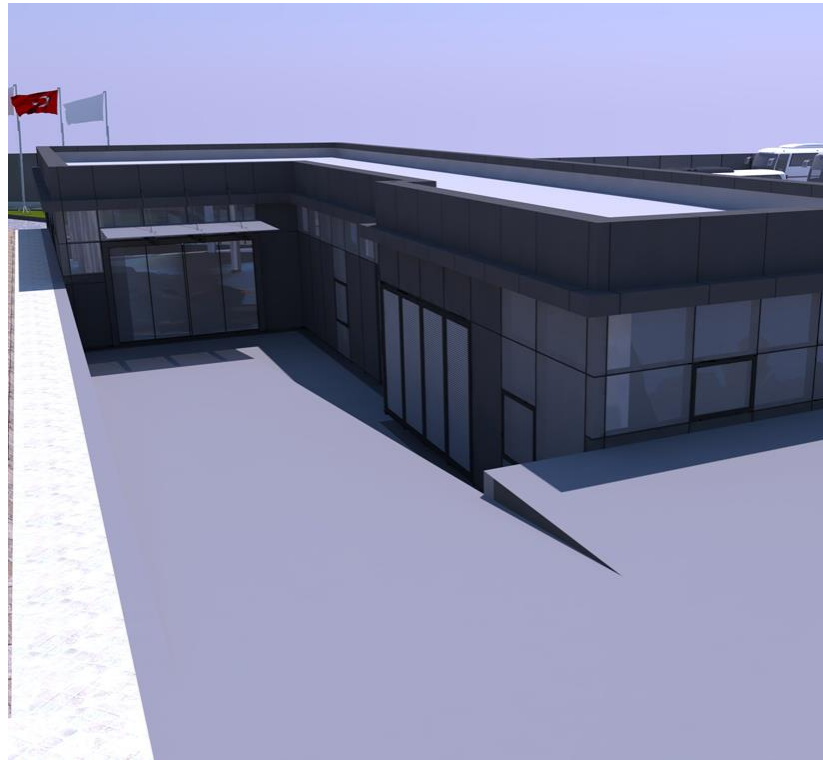
administration  
buildings

industrial buildings

mix use development  
buildings

residential – social –  
cultural buildings

reference letters



siemens registration building //

siemens //

- design service ☒
- supervision service ☐
- management service ☐

gosb – kocaeli //

2016 //

450,00 sqm //

introduction

architecture

engineering

consultancy

services

administration  
buildings

industrial buildings

mix use development  
buildings

residential – social –  
cultural buildings

reference letters



# siemens df-cs flender production facility //

siemens //

- design service ☒
- supervision service ☐
- management service ☒

gosb – kocaeli //

2016 //

2.870,00 sqm //

- introduction
- architecture
- engineering
- consultancy
- services
- administration buildings
- industrial buildings
- mix use development buildings
- residential – social – cultural buildings
- reference letters



# putzmeister production facility //

## putzmeister //

- design service ☒
- supervision service ☐
- management service ☒

cerkezkoy osb - tekirdag //

2007 //

24.700 sqm //



introduction

architecture

engineering

consultancy

services

administration  
buildings

industrial buildings

mix use development  
buildings

residential – social –  
cultural buildings

reference letters



# avon cosmetic packaging facility //

## avon cosmetics //

- design service ☒
- supervision service ☐
- management service ☒

gosb - kocaeli //

2007 //

17.000 sqm //

introduction

architecture

engineering

consultancy

services

administration  
buildings

industrial buildings

mix use development  
buildings

residential – social –  
cultural buildings

reference letters



kcc paint production facility //

korean chemical company //

design service ☒

supervision service ☒

management service ☐

gosb - kocaeli //

2007 //

14.000 sqm //

introduction

architecture

engineering

consultancy

services

administration  
buildings

industrial buildings

mix use development  
buildings

residential – social –  
cultural buildings

reference letters



# cantaş cooling gas filling facility //

## cantaş //

- design service ☒
- supervision service ☒
- management service ☐

güzeller osb - kocaeli //

2007 //

9.252 sqm //



introduction

architecture

engineering

consultancy

services

administration  
buildings

industrial buildings

mix use development  
buildings

residential – social –  
cultural buildings

reference letters



bilim pharmaceutical facility //  
bilim ilaç //

design service ☒

supervision service ☐

management service ☒

gosb - kocaeli //  
2008 //  
50.000 sqm //

introduction

architecture

engineering

consultancy

services

administration  
buildings

industrial buildings

mix use development  
buildings

residential – social –  
cultural buildings

reference letters



# c form production facility //

## cantaş //

- design service ☒
- supervision service ☒
- management service ☐

guzeller osb - kocaeli //

2011 //

8.500 sqm //

introduction

architecture

engineering

consultancy

services

administration  
buildings

industrial buildings

mix use development  
buildings

residential – social –  
cultural buildings

reference letters



# clariant production facility //

## clariant (masterbatch) //

- design service ☒
- supervision service ☐
- management service ☒

gosb – kocaeli //

2011 //

10.000 sqm //



introduction

architecture

engineering

consultancy

services

administration  
buildings

industrial buildings

mix use development  
buildings

residential – social –  
cultural buildings

reference letters



## polyplex resins production facility //

### polyplex resins //

- design service ☒
- supervision service ☐
- management service ☒

efz - çorlu //

2011 //

27.000 sqm //

introduction

architecture

engineering

consultancy

services

administration  
buildings

industrial buildings

mix use development  
buildings

residential – social –  
cultural buildings

reference letters



# anadolu motor production facility //

## anadolu motor //

- design service ☒
- supervision service ☐
- management service ☒

çayırova - kocaeli //

2014 //

22.667 sqm //



introduction

architecture

engineering

consultancy

services

administration  
buildings

industrial buildings

mix use development  
buildings

residential – social –  
cultural buildings

reference letters



# frb frozen bread production and storage facility //

## frb frozen bread //

- design service ☒
- supervision service ☐
- management service ☒

dudullu osb - istanbul //

2014 //

17.081 sqm //



introduction

architecture

engineering

consultancy

services

administration  
buildings

industrial buildings

mix use development  
buildings

residential – social –  
cultural buildings

reference letters



# adel faber castell production facility //

## adel faber castell //

- design service ☒
- supervision service ☐
- management service ☒

çayırova – kocaeli //

2014 //

36.438 sqm //

introduction

architecture

engineering

consultancy

services

administration  
buildings

industrial buildings

mix use development  
buildings

residential – social –  
cultural buildings

reference letters



akümsan storage facility //  
akümsan //

- design service ☒
- supervision service ☐
- management service ☐

kıraç - istanbul //  
2013 //  
5,416 sqm //



introduction

architecture

engineering

consultancy

services

administration  
buildings

industrial buildings

mix use development  
buildings

residential – social –  
cultural buildings

reference letters



3m super hub facility //  
3m //

- design service ☒
- supervision service ☐
- management service ☒

efz - çorlu //  
2013 //  
10.280 sqm //



introduction

architecture

engineering

consultancy

services

administration  
buildings

industrial buildings

mix use development  
buildings

residential – social –  
cultural buildings

reference letters



massey ferguson facility //

massey ferguson - agco //

- design service ☒
- supervision service ☐
- management service ☒

gosb - kocaeli //

2013 //

10.546 sqm //

introduction

architecture

engineering

consultancy

services

administration  
buildings

industrial buildings

mix use development  
buildings

residential – social –  
cultural buildings

reference letters



# scattolini production facility //

## scattolini //

- design service ☒
- supervision service ☐
- management service ☐

acisu osb - adapazari //

2013 //

11.750 sqm //



introduction

architecture

engineering

consultancy

services

administration  
buildings

industrial buildings

mix use development  
buildings

residential – social –  
cultural buildings

reference letters



# iff production and storage facility // iff aroma //

design service ☒

supervision service ☐

management service ☐

gosb - kocaeli //  
2012 //  
11.860 sqm //



introduction

architecture

engineering

consultancy

services

administration  
buildings

industrial buildings

mix use development  
buildings

residential – social –  
cultural buildings

reference letters



# selçuk ezca logistic storage facility //

## selçuk ecza holding //

- design service ☒
- supervision service ☐
- management service ☐

gosb - kocaeli //

2011 //

33.000 sqm //

introduction

architecture

engineering

consultancy

services

administration  
buildings

industrial buildings

mix use development  
buildings

residential – social –  
cultural buildings

reference letters



# wilo pump service and storage facility //

wilo //

- design service ☒
- supervision service ☐
- management service ☐

orhanli - istanbul //

2010 //

8.250 sqm //

introduction

architecture

engineering

consultancy

services

administration  
buildings

industrial buildings

mix use development  
buildings

residential – social –  
cultural buildings

reference letters



tec turkish engine center //

pratt & whitney thy technic //

sabiha gökçen havalimani - istanbul //

2009 //

25.000 sqm //

design service ☒

supervision service ☒

management service ☐



introduction

architecture

engineering

consultancy

services

administration  
buildings

industrial buildings

mix use development  
buildings

residential – social –  
cultural buildings

reference letters



areva production facility //

areva (schneider) //

- design service ☒
- supervision service ☒
- management service ☐

tosb - kocaeli //

2009 //

32.000 sqm //

introduction

architecture

engineering

consultancy

services

administration  
buildings

industrial buildings

mix use development  
buildings

residential – social –  
cultural buildings

reference letters



# plastifay production facility //

## plastifay //

- design service ☒
- supervision service ☐
- management service ☐

gebkim osb - kocaeli //

2014 //

14.000 sqm //



introduction

architecture

engineering

consultancy

services

administration  
buildings

industrial buildings

mix use development  
buildings

residential – social –  
cultural buildings

reference letters



eczacıbaşı hygiene facility //

eczacıbaşı hijyen //

- design service ☒
- supervision service ☒
- management service ☐

gosb - kocaeli //

2014 //

24.120 sqm //



introduction

architecture

engineering

consultancy

services

administration  
buildings

industrial buildings

mix use development  
buildings

residential – social –  
cultural buildings

reference letters



# ravago production facility // ravago //

- design service ☒
- supervision service ☒
- management service ☐

alosbi - izmir //  
2014 //  
41.000 sqm //

introduction

architecture

engineering

consultancy

services

administration  
buildings

industrial buildings

mix use development  
buildings

residential – social –  
cultural buildings

reference letters



# ravago production facility // ravago rmea //

- design service ☒
- supervision service ☐
- management service ☐

al jubial – ksa //  
2014 //  
21.000 sqm //

introduction

architecture

engineering

consultancy

services

administration  
buildings

industrial buildings

mix use development  
buildings

residential – social –  
cultural buildings

reference letters



basf chemical facility //  
basf //

- design service ☒
- supervision service ☐
- management service ☐

gosb - kocaeli //  
2011 //  
6.000 sqm //



introduction

architecture

engineering

consultancy

services

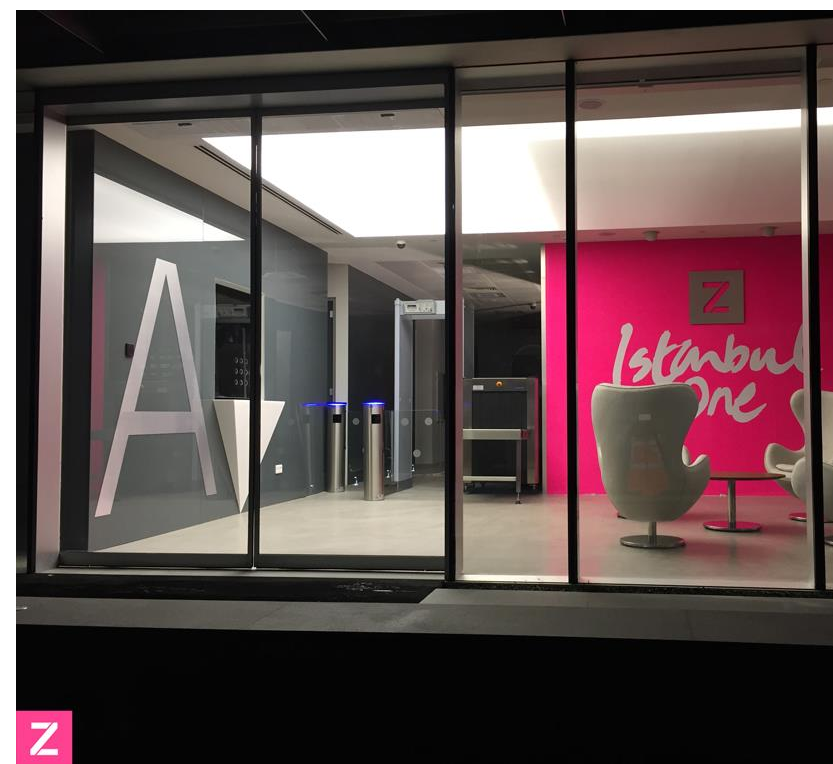
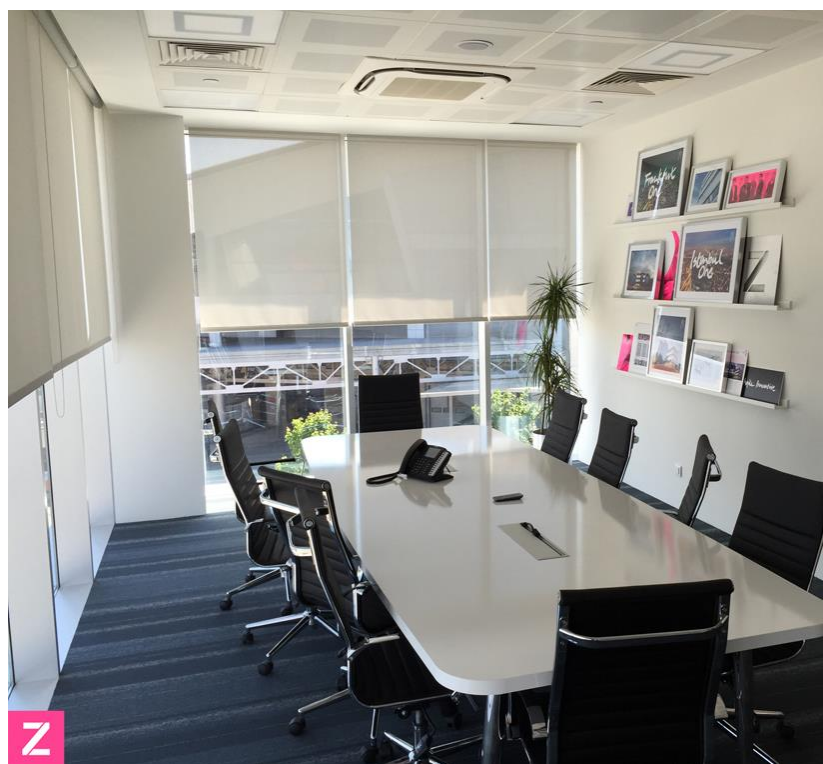
administration  
buildings

industrial buildings

mix use development  
buildings

residential – social –  
cultural buildings

reference letters



zenium one data center //

kent development //

dudullu osb – İstanbul //

2014 //

33.000 sqm //

design service ☒

supervision service ☒

management service ☐

introduction

architecture

engineering

consultancy

services

administration  
buildings

industrial buildings

mix use development  
buildings

residential – social –  
cultural buildings

reference letters



bakcell data center //  
kent development //

- design service ☒
- supervision service ☐
- management service ☐

2013 //  
19.830 sqm //



introduction

architecture

engineering

consultancy

services

administration  
buildings

industrial buildings

mix use development  
buildings

residential – social –  
cultural buildings

reference letters



istanbul data center //

kent development //

design service ☒

supervision service ☐

management service ☐

istanbul //

2013 //

20.845 sqm //



introduction

architecture

engineering

consultancy

services

administration  
buildings

industrial buildings

mix use development  
buildings

residential – social –  
cultural buildings

reference letters



# IBM data center// kent development//

- design service ☒
- supervision service ☐
- management service ☐

2013 //  
12.136,28 sqm //

introduction

architecture

engineering

consultancy

services

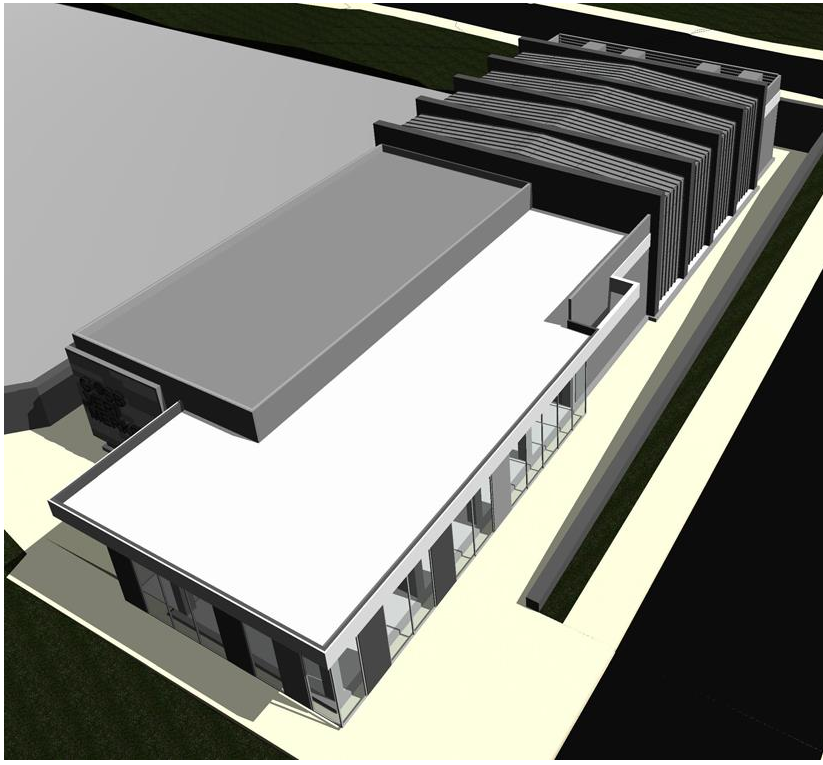
administration  
buildings

industrial buildings

mix use development  
buildings

residential – social –  
cultural buildings

reference letters



gosb data center //

gosb administration //

- design service ☒
- supervision service ☐
- management service ☐

2016 //

620 sqm //

introduction

architecture

engineering

consultancy

services

administration  
buildings

industrial buildings

mix use development  
buildings

residential – social –  
cultural buildings

reference letters



turkcell data center //  
turkcell //

design service ☒

supervision service ☐

management service ☐

edirne //

2016 //

1.720,96 sqm //



introduction

architecture

engineering

consultancy

services

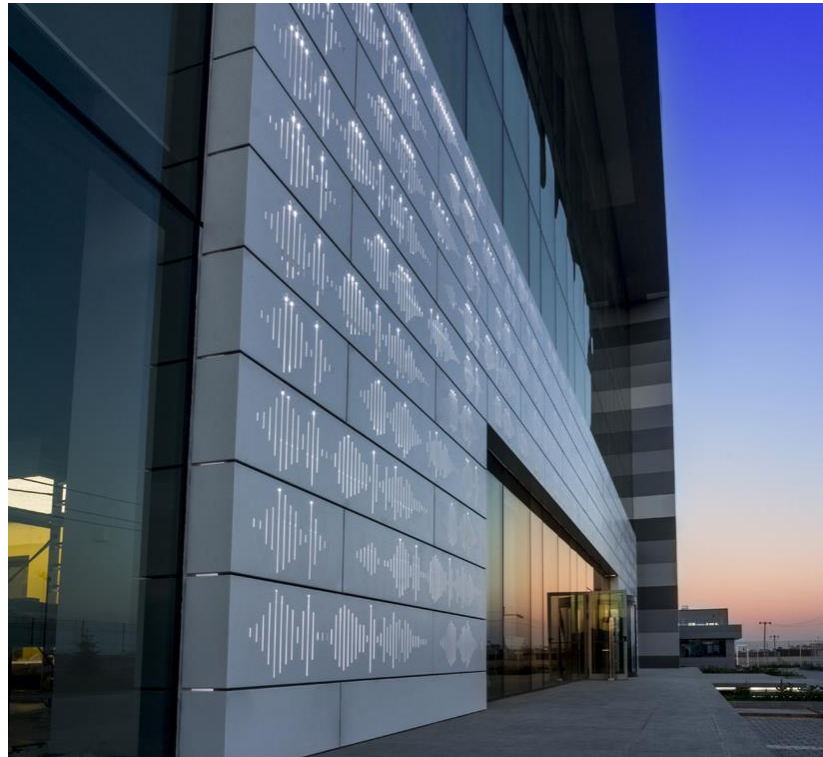
administration  
buildings

industrial buildings

mix use development  
buildings

residential – social –  
cultural buildings

reference letters



turkcell data center //  
tek yapı //

gosb - kocaeli //  
2016 //  
39.770 sqm //

- design service ☐
- supervision service ☒
- management service ☐

# **mix use development buildings**

introduction

architecture

engineering

consultancy

services

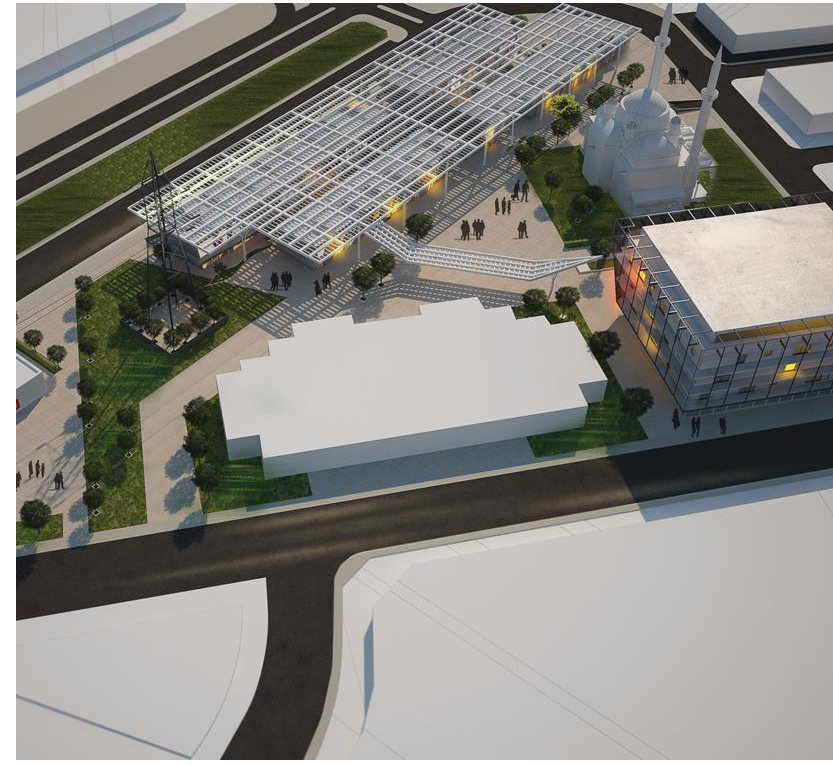
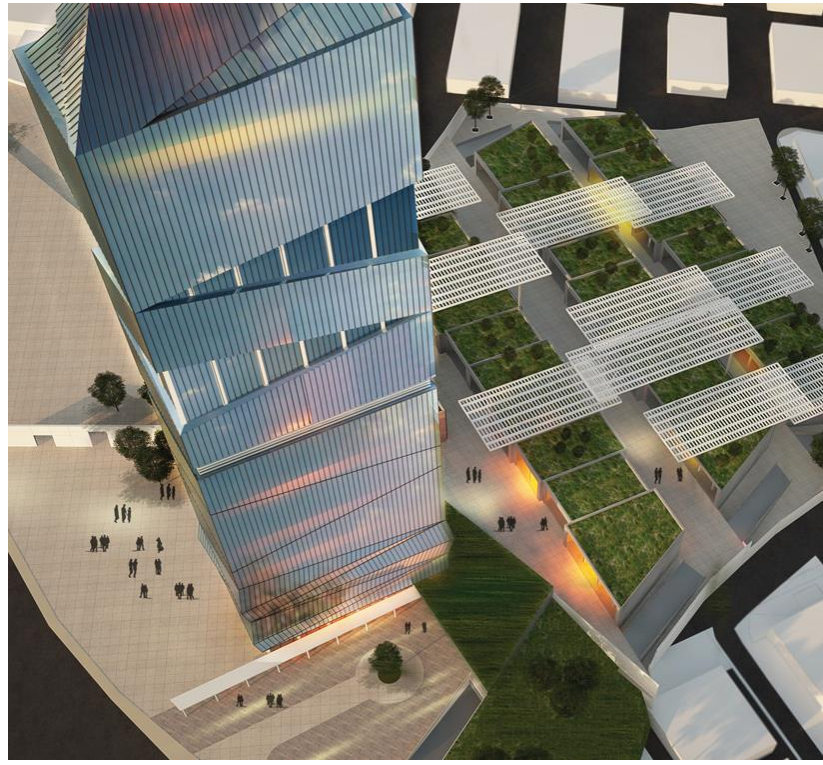
administration  
buildings

industrial buildings

mix use development  
buildings

residential – social –  
cultural buildings

reference letters



des mix use project //

des gayrimenkul //

dudullu – istanbul //

2015 //

154.000 sqm //

- design service ☒
- supervision service ☐
- management service ☐



introduction

architecture

engineering

consultancy

services

administration  
buildings

industrial buildings

mix use development  
buildings

residential – social –  
cultural buildings

reference letters



design service ☒

supervision service ☐

management service ☐

kaftan tower //  
çiftçiler //

gaziosmanpaşa - istanbul //

2012 //

250.000 sqm //

**residential – social – cultural buildings**

introduction

architecture

engineering

consultancy

services

administration  
buildings

industrial buildings

mix use development  
buildings

residential – social –  
cultural buildings

reference letters



design service

☒

supervision service

☒

management service

☐

villa house - şile //

private //

ovacık - istanbul //

2013 //

650 sqm //



introduction

architecture

engineering

consultancy

services

administration  
buildings

industrial buildings

mix use development  
buildings

residential – social –  
cultural buildings

reference letters



# babas thermal houses //

## babas termal resort //

- design service ☒
- supervision service ☐
- management service ☐

mudurnu - bolu //

2013 //

75.000 sqm //

introduction

architecture

engineering

consultancy

services

administration  
buildings

industrial buildings

mix use development  
buildings

residential – social –  
cultural buildings

reference letters



design service

☒

supervision service

☐

management service

☐

building //

private //

şile //

2016 //

2.200,00 sqm //



introduction

architecture

engineering

consultancy

services

administration  
buildings

industrial buildings

mix use development  
buildings

residential – social –  
cultural buildings

reference letters



- design service ☒
- supervision service ☒
- management service ☐

gosb mosque //

gosb administration //

gosb - kocaeli //

2014 //

6.490 sqm //



introduction

architecture

engineering

consultancy

services

administration  
buildings

industrial buildings

mix use development  
buildings

residential – social –  
cultural buildings

reference letters



- design service ☒
- supervision service ☐
- management service ☐

imes mosque //

imes osb administration //

kocaeli //

2013 //

5.300 sqm //

introduction

architecture

engineering

consultancy

services

administration  
buildings

industrial buildings

mix use development  
buildings

residential – social –  
cultural buildings

reference letters



# gosb professional training facility //

## gosb administration //

- design service ☒
- supervision service ☐
- management service ☐

gosb - kocaeli //

2016 //

29.150 sqm //



introduction

architecture

engineering

consultancy

services

administration  
buildings

industrial buildings

mix use development  
buildings

residential – social –  
cultural buildings

reference letters



idosb education campus //  
idosb administration //

dudullu – istanbul //  
2016 //  
65.755 sqm //

- design service ☒
- supervision service ☐
- management service ☐



introduction

architecture

engineering

consultancy

services

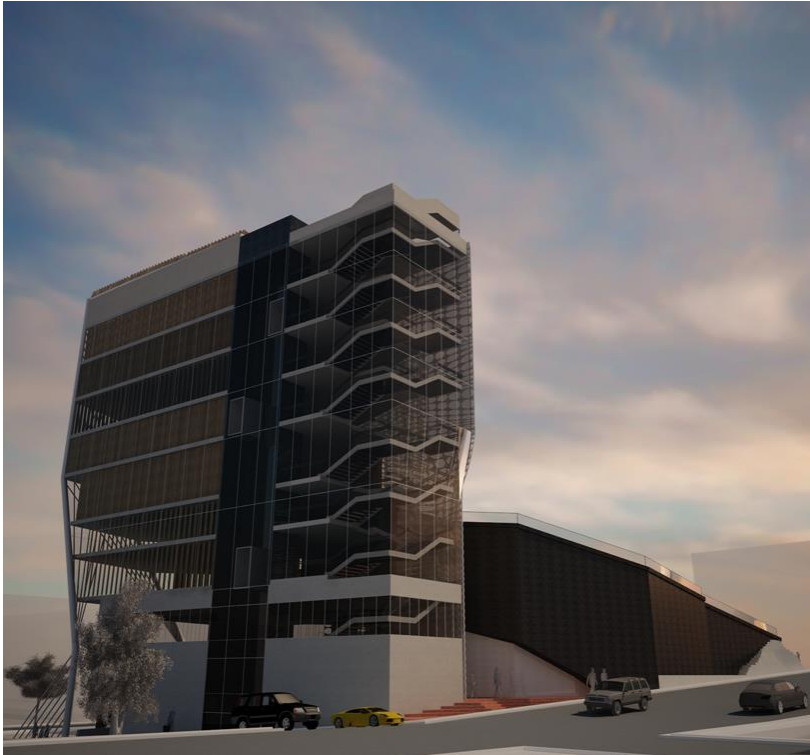
administration  
buildings

industrial buildings

mix use development  
buildings

residential – social –  
cultural buildings

reference letters



hea cultural center //  
şişli municipality //

design service ☒

supervision service ☐

management service ☐

istanbul //  
2011 //  
15.000 m<sup>2</sup> //

reference letters

introduction

architecture

engineering

consultancy

services

Administration  
buildings

industrial buildings

mix use development  
buildings

residential – social –  
cultural buildings

reference letters



Plastik Ürünler Sanayi ve Ticaret A.Ş.



İSTANBUL 15/12/2014

İlgili Makama  
Sn. Yetkili

Şirketimize ait İstiklal Mah. Atatürk Cad. No:19 Esenyurt/İstanbul adresinde bulunan Üretim ve Depolama Tesisinin tasarım ve kontrollük işleri sırasında Mimar Sn. Alaz ALBAY ile çalışılmıştır.

Sn. ALBAY'ın başarılı çalışmalarından dolayı ikinci tesisimiz olan Akçaburgaz Mah. Mareşal Fevzi Çakmak Cad. No:4 Esenyurt/İstanbul adresindeki tesisinin tasarım işleri sırasında Proje Müellifi olarak tekrar tercih edilmiş ve kendisi ile çalışılmıştır.

Her iki tesisimizin yapımında görev alan Sn. ALBAY görev süresinde firmamızın çıkarlarını ve projenin سلامتini ön planda tutarak başarılı bir hizmet vermiştir. Kendisi ile çalışılmasını tavsiye ederiz.

Saygılarımızla,



introduction

architecture

engineering

consultancy

services

administration  
buildings

industrial buildings

mix use development  
buildings

residential – social –  
cultural buildings

reference letters

 **ALARKO**



**ALARKO CARRIER  
SANAYİ VE TİCARET A.Ş.**

**ALARKO CARRIER SANAYİ VE TİCARET A.Ş.**  
**Merkez :** Muallim Naci Cad. No: 69, 34347  
Ortaköy – İSTANBUL Tel: (0 212) 227 52 00  
**Gebze Fabrika :**  
GOSB, Şahabettin Bilgisu Cad. 41480  
Gebze – KOCAELİ Tel: (0 262) 648 60 00  
**Web :** [www.alarko-carrier.com.tr](http://www.alarko-carrier.com.tr)  
**E Posta :** [info@alarko-carrier.com.tr](mailto:info@alarko-carrier.com.tr)  
**Ticaret Sicil No :** 85696  
**Vergi Dairesi :** Büyük Mükellefler, 048 003 6184

**LÜTFEN İLGİLİ YAZINIZDA AŞAĞIDAKİ REFERANS  
NUMARASINI BELİRTİNİZ.**

☐ Tarih : 09/12/2014  
☐ Referans No :

İlgili Mercilere,

ÖZÜ : Referans Yazısı

Alarko Carrier'in Gebze Organize Sanayi Bölgesi Üretim ve Yönetim Tesisinin tasarım ve inşaat kontrollük işleri sırasında , çalışmakta olduğu firma adına proje sorumlusu olarak Mimar Alaz Albay ile çalışılmıştır.

Kendisi görev süresinde firmamızın çıkarlarını ve projenin selametini ön planda tutarak başarılı bir hizmet vermiştir.

Bu çalışma tesisin tamamlandığından bu yana gayet yapıcı bir ilişki olarak da devam etmektedir.

Bizim açımızdan kendisi, çalışılması tavsiye edilecek biri olarak değerlendirilmektedir.

Saygılarımızla,

introduction

architecture

engineering

consultancy

services

administration  
buildings

industrial buildings

mix use development  
buildings

residential – social –  
cultural buildings

reference letters



**ANADOLU MOTOR**  
**ÜRETİM VE PAZARLAMA A.Ş.**  
 Merkez: Esentepe Mah. Anadolu Caddesi  
 No:5 Kartal 34870 İstanbul  
 T : (+90 216) 3064180 F : (+90 216) 4882000  
 Fabrika: Şekerpınar Mah. Albayrak Sok.No:4  
 Çayırova 41435 Kocaeli  
 T : (+90 262) 999 23 00 F : (+90 262) 658 15 74  
 Ticaret Sicil No: 410483  
 Anadolu Kurumlar V.D. 0680185008

[www.anadolumotor.com.tr](http://www.anadolumotor.com.tr)

Tarih / Date : 03.10.2014  
 Ref. No. / Ref. Nr. :

Sayın İlgili;

Firmamızın Şekerpınar Üretim Depolama Tesisi ve Yönetim Binası inşaatının mimari projesini Sn. Alaz Albay üstlenmiştir. Kendisi ile yaklaşık 3 yılı aşkın süredir Proje tasarım ve Proje Kontrollük işleri nedeniyle çalışmaktayız.

Sn.Albay üstlendiği görevleri; işine hakimiyeti, bize iyi hizmet sunma yönündeki gayreti, yaptığı çalışmalarda kaliteyi ön planda tutup müşterileri memnuniyetine göstermiş olduğu önem ve hassasiyet ile başarıyla yerine getirmiştir.

Kendisi ile çalışılmasını tavsiye ederim.  
 Saygılarımızla,

8.8.2016

Sn. ilgili

Azerbaycan’da KoçSistem ile birlikte yürüttüğümüz “BAKCELL OMC” Projesine ait fikir projesi çalışmalarında Alaz Albay Mimarlık Mühendislik Müşavirlik A.Ş. ile çalışılmıştır.

Alaz Albay Mimarlık Mühendislik Müşavirlik A.Ş. projemizde başarılı bir çalışma yürütmüştür.



introduction

architecture

engineering

consultancy

services

administration  
buildings

industrial buildings

mix use development  
buildings

residential – social –  
cultural buildings

reference letters



CForm ..... A.Ş güzeller organize sanayi bölgesi soğutma ekipmanları üretim ve Depolama tesisi yatırımımızın tüm tasarımı proje müellifi mimar A.Alaz Albay tarafından yapılmıştır. Kendisi ile çalışılmasını tavsiye ederiz.



Cantaş Soğutma..... A.Ş güzeller organize sanayi bölgesi soğutma Gazı Dolum ve Depolama tesisi yatırımımızın tüm tasarımı proje müellifi mimar A.Alaz Albay tarafından yapılmıştır. Kendisi ile çalışılmasını tavsiye ederiz.

introduction

architecture

engineering

consultancy

services

administration  
buildings

industrial buildings

mix use development  
buildings

residential – social –  
cultural buildings

reference letters

introduction

architecture

engineering

consultancy

services

administration  
buildings

industrial buildings

mix use development  
buildings

residential – social –  
cultural buildings

reference letters



## SAYIN İLGİLİ

Tarih: 03.08.2016

Sayı: EVR/16-1286

Gebze Organize Sanayi Bölgesi içinde yapımına bağlanan "GOSB Kontrol ve Veri Merkezi" yatırımı ile ilgili mimari, statik, mekanik, elektrik ve altyapı disiplinlerindeki tüm proje aşamalarında Alaz Albay Mimarlık Mühendislik Müşavirlik A.Ş. ile çalışılmıştır.

Firma, görev süresi boyunca üst düzey performans ile çalışmak sureti ile kuruluşumuzun çıkarlarını korumuş, projenin zamanında ve hedef standartlara uygun şekilde hayata geçirilmesi için başarılı bir hizmet vermiştir.

Alaz Albay Mimarlık Mühendislik Müşavirlik A.Ş. ile çalışılmasını tavsiye ederiz.

Saygılarımızla,



introduction

architecture

engineering

consultancy

services

administration  
buildings

industrial buildings

mix use development  
buildings

residential – social –  
cultural buildings

reference letters

## Hill International

Hill International Proje Yönetimi ve Danışmanlık A.Ş.  
Büyükdere Cad. Ali Kaya Sok. Polat Plaza B Blok  
Kat:10 Esentepe, Şişli 34394 İstanbul / Türkiye  
T: +90 (212) 270 96 50 F: +90 (212) 270 96 55  
[www.hillintl.com](http://www.hillintl.com)

4 Ağustos 2016

Sn. İlgili

Proje yönetimi tarafımızca gerçekleştirilen Edirne Bademlik’de yer alan “Turkcell Edirne Veri Merkezi İnşaatı” ile Kayseri’de yer alan “Turkcell Kayseri Veri Merkezi Tadilatı” yatırımı ile ilgili mimarlık, mühendislik disiplinlerinde tüm proje aşamalarında, Alaz Albay Mimarlık Mühendislik Müşavirlik A.Ş. ile çalışılmıştır.

Alaz Albay Mimarlık Mühendislik Müşavirlik A.Ş. işe hâkimiyeti, bilgi ve birikimi ile çalışmalarımıza ciddi katkı sağlamıştır.

Bilgilerinize sunarız.

introduction

architecture

engineering

consultancy

services

administration  
buildings

industrial buildings

mix use development  
buildings

residential – social –  
cultural buildings

reference letters

**KENT** Development

8.8.2016

Sn. İlgili

Türkiye’de ticari veri merkezi konusunda bir ilk olması adına başladığımız “Datacenter İstanbul” Projesine ait fikir ve avan projesi çalışmalarında Alaz Albay Mimarlık Mühendislik Müşavirlik A.Ş. ile çalışılmıştır.

Alaz Albay Mimarlık Mühendislik Müşavirlik A.Ş., Türkiye’de bir ilk olmasına rağmen doğru çözümlerin üretiminde başarılı bir çalışma yürütmüştür.

introduction

architecture

engineering

consultancy

services

administration  
buildings

industrial buildings

mix use development  
buildings

residential – social –  
cultural buildings

reference letters



## Plastifay Kimya Endüstrisi A.Ş.

Cendere Caddesi No: 9 34408 Kağıthane / İSTANBUL  
e-mail : [plastifay@plastifay.com.tr](mailto:plastifay@plastifay.com.tr) TURKEY  
[www.plastifay.com.tr](http://www.plastifay.com.tr)

Tel : +90 212 294 39 00 pbx  
Fax : +90 212 294 39 05

İstanbul, 03.10.2014

**Sn İlgili ,**

Gebze , Dilovasi , Gebkim / Kimya ihtisas OSB de yapılmakta olan fabrika yatırımımız ile ilgili,

İnşaat evveli tüm proje süreçlerimizde , ve inşaat sürecinde **Sayın Alaz Albay** 'ın bilgi ve tecrübesinden faydalandık ,  
Yaptığımız araştırmalarda kendisi ve ekibinin, bu tarz sanayi tesisleri projelendirme konusunda yüksek tecrübeleri olduğu yönündedir,

Kendisi ve ekibine teşekkür ederiz,

Saygılarımızla



introduction

architecture

engineering

consultancy

services

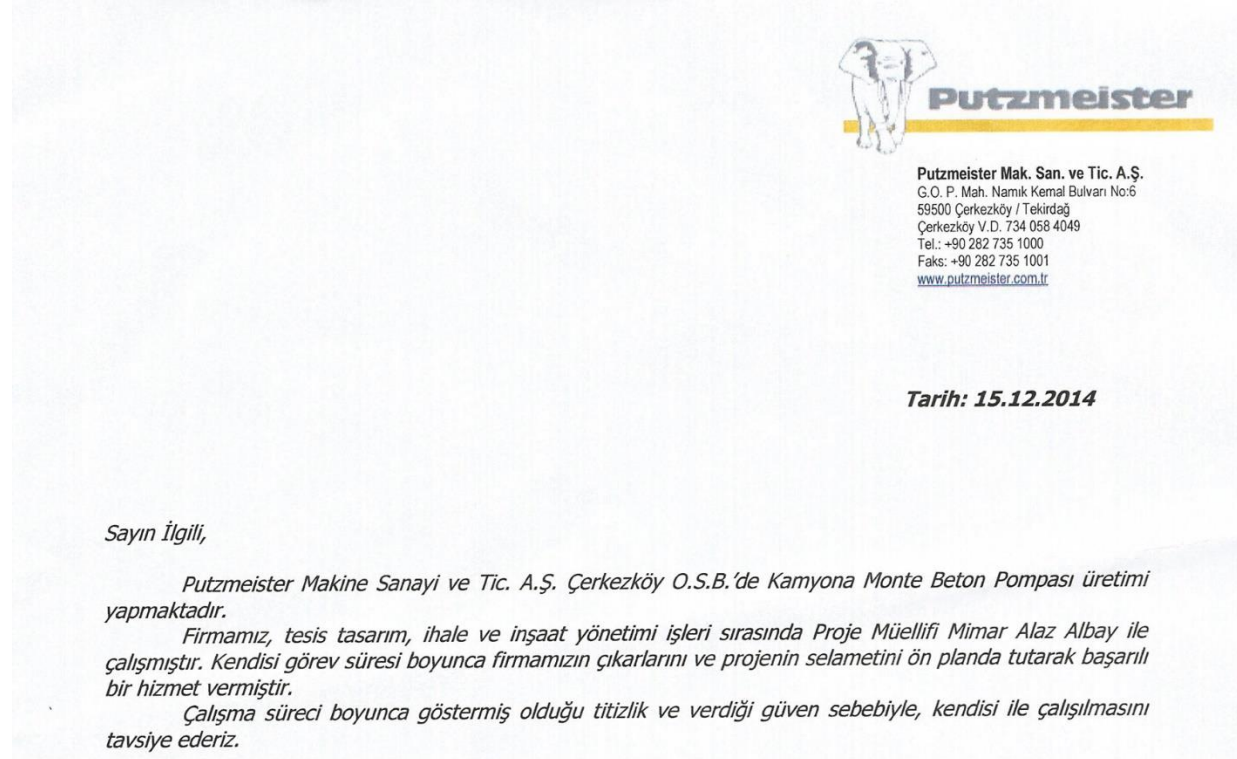
administration  
buildings

industrial buildings

mix use development  
buildings

residential – social –  
cultural buildings

reference letters





Lettera.doc

Date **3rd October 2014**

Prot.

To whom it may concern

To whom it may concern,

All design works of our **SCATTOLINI Otomotiv** Production and Storage Facility investment in Acisu Industrial Zone – Turkey have been executed by Alaz ALBAY as our architect of record.

For my personal experience I highly recommend him for his excellent capacities at building design and the related management services as well as his professional and Customer oriented attitude.

Sincerely,

introduction

architecture

engineering

consultancy

services

administration  
buildings

industrial buildings

mix use development  
buildings

residential – social –  
cultural buildings

reference letters

# SIEMENS

11-2014

24.10.2014

## Konu: Referans yazısı hk.

Siemens A.Ş Gebze Organize Sanayi Bölgesi (GOSB) Üretim ve Depolama tesisi yatırımımızın tüm tasarımı, proje müellifimiz mimar A.Alaz Albay tarafından yürütülmüştür. Proje süresince yapmış olduğu başarılı çalışma için kendisine teşekkür ederiz.

Saygılarımızla,

introduction

architecture

engineering

consultancy

services

administration  
buildings

industrial buildings

mix use development  
buildings

residential – social –  
cultural buildings

reference letters



# SIEMENS

12-2014

24.10.2014

## Konu: Referans yazısı hk.

Siemens A.Ş Gebze Organize Sanayi Bölgesi (GOSB) Üretim ve Depolama tesisi mutfak yatırımımızın tüm tasarımı, proje müellifimiz mimar A.Alaz Albay tarafından yürütülmüştür. Proje süresince yapmış olduğu başarılı çalışma için kendisine teşekkür ederiz.

Saygılarımızla,

introduction

architecture

engineering

consultancy

services

administration  
buildings

industrial buildings

mix use development  
buildings

residential – social –  
cultural buildings

reference letters

introduction

architecture

engineering

consultancy

services

administration  
buildings

industrial buildings

mix use development  
buildings

residential – social –  
cultural buildings

reference letters



tek yapı inşaat  
ve ticaret a.ş.

Esentepe Mah. Koreşhitleri Cad.  
Mithat Ulu Unlu Sokak No:16  
34394 Şişli, İstanbul, Türkiye  
T : +90 212 275 75 10  
F : +90 212 273 20 41  
www.tekyapi.com

04 Ağustos 2016

## Referans Mektubu – Alaz Albay Mimarlık Mühendislik Müşavirlik A.Ş.

Sayın İlgili,

Gebze Organize Sanayi Bölgesi sınırları içinde yapım yüklenimi tarafımızca gerçekleştirilen “Turkcell Veri Merkezi” yatırımı ile ilgili mimari disiplinindeki tüm proje aşamalarında, diğer disiplinler ile olan koordinasyonda Alaz Albay Mimarlık Mühendislik Müşavirlik A.Ş. ile çalışılmıştır.

Alaz Albay Mimarlık Mühendislik Müşavirlik A.Ş. ile işbirliğimizden memnun olduğumuzu, işe hâkimiyet, bilgi ve birikimi ile çalışmalarımıza önemli katkılar sağladığını ifade etmek isteriz.

Alaz Albay Mimarlık Mühendislik Müşavirlik A.Ş. ile çalışılmasını tavsiye ederiz.

Saygılarımızla,

introduction

architecture

engineering

consultancy

services

administration  
buildings

industrial buildings

mix use development  
buildings

residential – social –  
cultural buildings

reference letters

**KENT** Development

8.8.2016

Sn. İlgili

İstanbul Dudullu Organize Sanayi Bölgesi sınırları içinde gerçekleştirilen “Zenium, İstanbul One Veri Merkezi” yatırımı ile ilgili mimari, statik, mekanik, elektrik ve altyapı disiplinlerindeki tüm proje aşamalarında ve mesleki kontrollük konusunda Alaz Albay Mimarlık Mühendislik Müşavirlik A.Ş. ile çalışılmıştır.

Alaz Albay Mimarlık Mühendislik Müşavirlik A.Ş., proje ve kontrollük hizmetleri aşamasında firmamızın ve yatırımın menfaatlerini ve üstlendiği projenin güvenliğini her zaman ön planda tutmuş, soru ve sorunlara hızlı ve doğru çözüm üretmek başarılı bir çalışma yürütmüştür.



introduction

architecture

engineering

consultancy

services

administration  
buildings

industrial buildings

mix use development  
buildings

residential – social –  
cultural buildings

reference letters



**Bilim İlaç Sanayi ve Ticaret A.Ş.**  
Genel Müdürlük  
Kaptanpaşa Mah. Zincirlikuyu Cad.  
No:184 34440 Beşiktaş-İSTANBUL  
Tel: (0 212) 365 15 00  
Faks: (0 212) 276 29 19  
Mersis No: 2947824561192280  
Vergi Dairesi ve No:  
Büyükmükellesler V.D 1750002098  
<http://www.bilimilac.com.tr>

15.12.2014

Sayın Yetkili,

Bilim İlaç, GOSB 1900 Sokak No:1904 41400 Gebze-Kocaeli adresinde bulunan İlaç Üretim Tesisinin 2006-2009 yılları arasındaki tasarım ve inşaat yönetim işleri sırasında Proje Müellifi Mimar Alaz Albay ile çalışılmıştır.

Kendisi görev süresi boyunca üst düzey performans ile çalışmak suretiyle kuruluşumuzun çıkarlarını ve projenin zamanında ve hedef standartlara uygun şekilde hayata geçirilmesi için başarılı bir hizmet vermiştir.

Kendisi ile çalışılmasını tavsiye ederiz.

introduction

architecture

engineering

consultancy

services

administration  
buildings

industrial buildings

mix use development  
buildings

residential – social –  
cultural buildings

reference letters

Clariant (Türkiye)  
Boya, Kimyevi Maddeler ve  
Madencilik San.ve Tic. A.Ş.

Gebze Organize Sanayi Bölgesi  
İhsan Dede Cad. No:143  
41480 Gebze - Kocaeli / Türkiye  
Tel : (0262) 673 73 73

**CLARIANT**

Sayın İlgili,

Şirketimizin Gebze Organize Sanayi Bölgesi 1 ada, G22B14C1D-1A numaralı pafta, 3 no'lu parselde mevcut 55.990.- m2 büyüklükteki arsası üzerinde kurulu bulunan Kimyasal Madde Üretim ve Depolama Tesisinin tasarım ve inşaat kontrolluk hizmetleri Sn.Alaz Albay yönetiminde yürütülmüştür.

Proje kapsamında 2007-2011 yılları arasında ve iki ayrı aşamada 16.000 m2 taban alanı üzerinde toplam yaklaşık 26.000 m2 inşaat alanına sahip çeşitli büyüklük ve fonksiyonlarda kimyasal madde üretim binası, masterbatch üretim binası, kimyasal madde depolama binası, yönetim binası ile bunlarla ilgili altyapı, enerji, arıtma binalarının tasarım ve yapımı gerçekleştirilmiştir.

Sn.Alaz Albay bu süre içerisinde gerek proje müellifi ve gerekse proje kontrol müdürü olarak firmamızın menfaatlerini ve üstlendiği projenin güvenliğini her zaman ön planda tutmuş, soru ve sorunlara hızlı ve doğru çözümler üreterek başarılı bir çalışma yürütmüştür.

Bu husus işveren adına proje yönetimini birlikte yürüttüğümüz İsviçre merkezde bulunan grup proje mühendislik birimi tarafından da çeşitli vesilelerle ifade edilmiştir.

Kendisi ile çalışılmasını tavsiye ederiz.

introduction

architecture

engineering

consultancy

services

administration  
buildings

industrial buildings

mix use development  
buildings

residential – social –  
cultural buildings

reference letters



24 Kasım 2016

Sayın, Alaz Albay Mimarlık, Mühendislik, Müşavirlik A. Ş.

Eczacıbaşı Hijyen Ürünleri Gebze fabrikamızın kuruluşunda, aşağıda belirtilen işler Alaz Albay Mimarlık, Mühendislik, Müşavirlik tarafından yapılmıştır.

- Satın alınan araziden azami istifade için iş akış ve proseslerimizin değerlendirilmesi,
- Fabrika operasyonuna ilave istenen lojistik depo ihtiyacını da dikkate alan avan yerleşim projelerinin oluşturulması,
- Ruhsat ve uygulamaya esas mimari, static, mekanik, elektrik ve bina otomasyon projelerinin oluşturulması,
- İhale iadarı ve teknik şartnamelerinin hazırlanması,
- Nihai yüklenici seçiminde danışmanlık,
- Takiben 12 ay süren inşaat ve geçici kabul süreçlerinde mesleki kontrollük ve müşavirlik hizmetleri

Yukarıda bahsedilen hizmetleriniz ve projemizin her safhasında gösterdiğiniz liderlik, yönlendirmeleriniz, yardımlarınız için teşekkür eder başarılarınızın devamını temenni ederim.